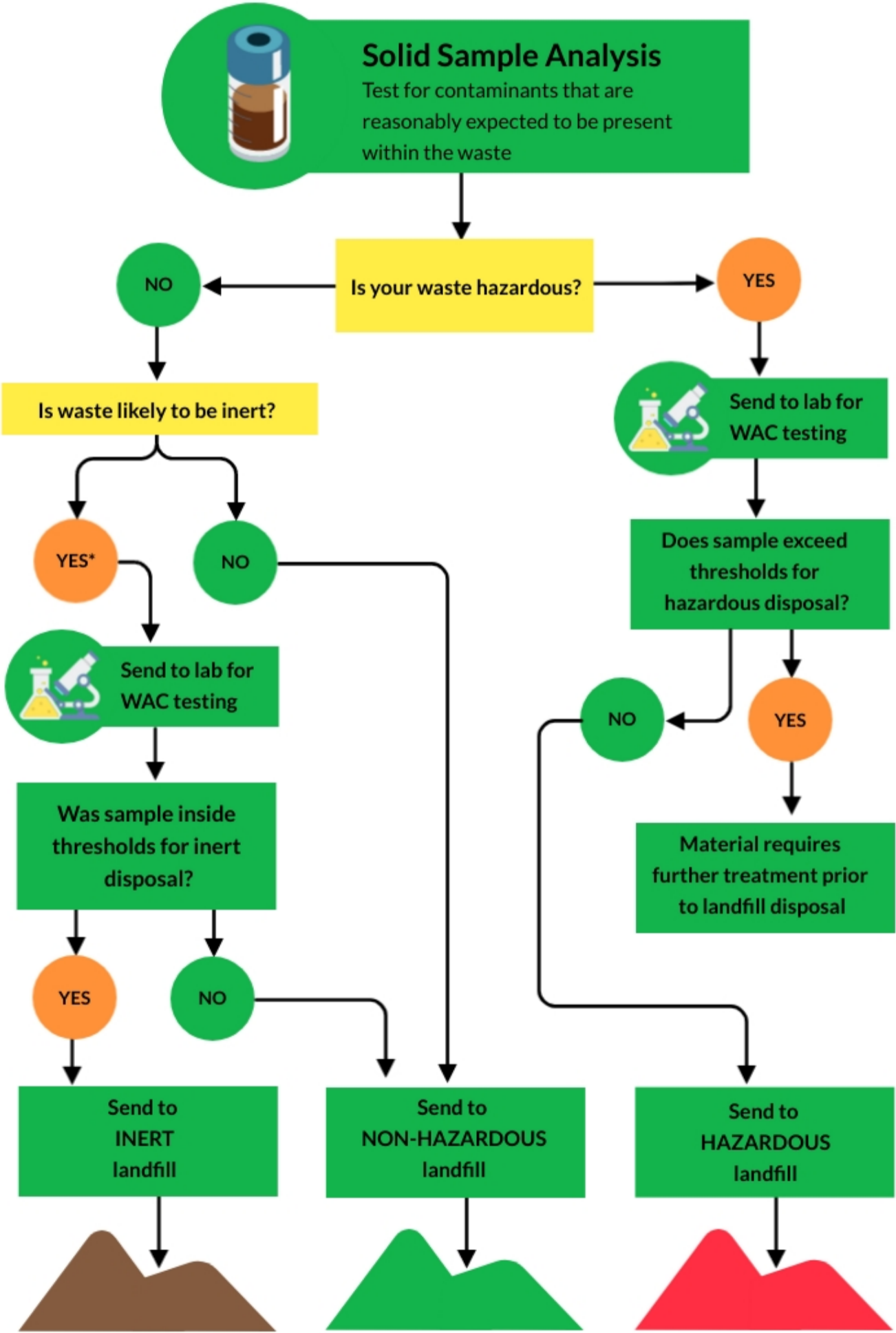


The first step to classifying your waste is to undertake a WM3 waste classification. This involves solid sample analysis for reasonably expected contaminants, although typically this will comprise a minimum of pH, heavy metals, PAH, TPH and asbestos presence/absence. This analysis can inform you whether your waste is hazardous or non-hazardous. Only once this step has been undertaken may WAC analysis be required, dependent on your desired disposal option.

*accuWaste* can assist you in every step of the waste classification process.



\*some inert waste will not require WAC testing if it meets the definition stated within Council Directive 1999/31/EC Article 2(e) and meets the criteria of section 2.1.1 of Council Decision 2003/33/EC.

Please don't hesitate to contact us at: [info@accuwaste.co.uk](mailto:info@accuwaste.co.uk)